

PIPELINE PRODUCTS



MALLEABLE FITTINGS NPT

Malleable Cast Iron Fittings Class 150 LBS NPT Threaded.

Specifications

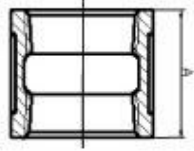
Production	: Manufacturing facilities ISO9001
Working pressure	: 150 PSI
Material	: Cast Iron ASTM A197
Finishing	: Hot Dip Galvanized ASTM A153
Dimensions	: Pipe Fittings ASME B16.3 16.14 Unions ASME B16.39
Thread	: NPT Threaded ANSI B1.20.1
Size	: 1/8 till 6 inch above 4 inch on request
Approvals	: UL Listed FM approved



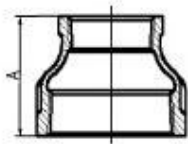
MALLEABLE FITTINGS NPT

Full Coupling

Malleable Cast Iron ASTM A197
Hot Dipped Galvanized



Code	Thread NPT	Size A mm
201SG18	1/8	24.4
201SG14	1/4	26.9
201SG38	3/8	29.5
201SG12	1/2	34.0
201SG34	3/4	38.6
201SG1	1	42.4
201SG114	1.1/4	49.0
201SG112	1.1/2	54.6
201SG2	2	64.3
201SG212	2.1/2	73.2
201SG3	3	80.8
201SG4	4	93.0



Reducing Coupling

Malleable Cast Iron ASTM A197
Hot Dipped Galvanized

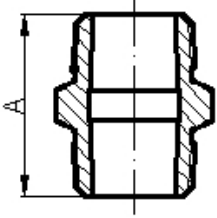
Code	Thread NPT	Size A mm
201SG14X18	1/4x1/8	25.4
201SG38X18	3/8x1/8	28.7
201SG38X14	3/8x1/4	28.7
201SG12X18	1/2x1/8	31.8
201SG12X14	1/2x1/4	31.8
201SG12X38	1/2x3/8	31.8
201SG34X18	3/4x1/8	36.6
201SG34X14	3/4x1/4	36.6
201SG34X38	3/4x3/8	36.6
201SG34X12	3/4x1/2	36.6
201SG1X14	1x1/4	42.9
201SG1X38	1x3/8	42.9
201SG1X12	1x1/2	42.9
201SG1X34	1x3/4	42.9
201SG114X12	1.1/4x1/2	52.3
201SG114X34	1.1/4x3/4	52.3
201SG114X1	1.1/4x1	52.3
201SG112X12	1.1/2x1/2	58.7
201SG112X34	1.1/2x3/4	58.7
201SG112X1	1.1/2x1	58.7
201SG112X114	1.1/2x1.1/4	58.7
201SG2X14	2x1/4	71.4
201SG2X38	2x3/8	71.4
201SG2X12	2x1/2	71.4
201SG2X34	2x3/4	71.4
201SG2X1	2x1	71.4
201SG2X114	2x1.1/4	71.4
201SG2X112	2x1.1/2	71.4
201SG212X112	2.1/2x1.1/2	82.6
201SG212X2	2.1/2x2	82.6
201SG3X112	3x1.1/2	93.7
201SG3X2	3x2	93.7
201SG3X212	3x2.1/2	93.7
201SG4X2	4x2	111.3
201SG4X212	4x2.1/2	111.3
201SG4X3	4x3	111.3

other sizes on request

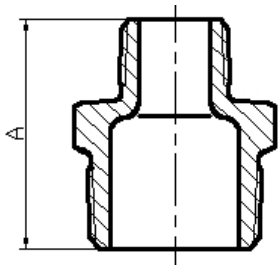
MALLEABLE FITTINGS NPT

Hexagon Nipple

Malleable Cast Iron ASTM A197
Hot Dipped Galvanized



Code	Thread NPT	Size A mm
203SG18	1/8	29.0
203SG14	1/4	36.0
203SG38	3/8	38.0
203SG12	1/2	43.0
203SG34	3/4	45.0
203SG1	1	52.0
203SG114	1.1/4	56.0
203SG112	1.1/2	58.0
203SG2	2	65.0
203SG212	2.1/2	72.0
203SG3	3	80.0
203SG4	4	92.0



Hexagon Nipple

Malleable Cast Iron ASTM A197
Hot Dipped Galvanized

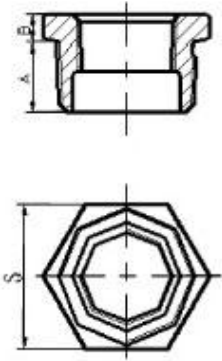
Code	Thread NPT	Size A mm
203SG14X18	1/4x1/8	36.0
203SG38X18	3/8x1/8	38.0
203SG38X14	3/8x1/4	38.0
203SG12X18	1/2x1/8	44.0
203SG12X14	1/2x1/4	44.0
203SG12X38	1/2x3/8	44.0
203SG34X14	3/4x1/4	47.0
203SG34X38	3/4x3/8	47.0
203SG34X12	3/4x1/2	47.0
203SG1X14	1x1/4	53.0
203SG1X38	1x3/8	53.0
203SG1X12	1x1/2	53.0
203SG1X34	1x3/4	53.0
203SG114X12	1.1/4x1/2	57.0
203SG114X34	1.1/4x3/4	57.0
203SG114X1	1.1/4x1	57.0
203SG112X12	1.1/2x1/2	59.0
203SG112X34	1.1/2x3/4	59.0
203SG112X1	1.1/2x1	59.0
203SG112X114	1.1/2x1.1/4	59.0
203SG2X12	2x1/2	68.0
203SG2X34	2x3/4	68.0
203SG2X1	2x1	68.0
203SG2X114	2x1.1/4	68.0
203SG2X112	2x1.1/2	68.0
203SG212X2	2.1/2x2	75.0
203SG3X2	3x2	83.0
203SG4X2	4x2	95.0
203SG4X3	4x3	95.0

other sizes on request

MALLEABLE FITTINGS NPT

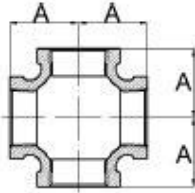
Hex bushing Male-Female

Malleable Cast Iron ASTM A197
Hot Dipped Galvanized



Code	Thread NPT	Size A mm	Size B mm	Size S mm
204SG14X18	1/4x1/8	11.2	3.6	16.3
204SG38X18	3/8x1/8	12.2	4.3	17.3
204SG38X14	3/8x1/4	12.2	4.1	17.3
204SG12X18	1/2x1/8	14.2	4.8	22.1
204SG12X14	1/2x1/4	14.2	4.8	22.1
204SG12X38	1/2x3/8	14.2	4.8	22.1
204SG34X18	3/4x1/8	16.0	5.6	29.2
204SG34X14	3/4x1/4	16.0	5.6	29.2
204SG34X38	3/4x3/8	16.0	5.6	29.2
204SG34X12	3/4x1/2	16.0	5.6	29.2
204SG1X14	1x1/4	19.1	6.4	36.1
204SG1X38	1x3/8	19.1	6.4	36.1
204SG1X12	1x1/2	19.1	6.4	36.1
204SG1X34	1x3/4	19.1	6.4	36.1
204SG114X14	1.1/4x1/4	20.3	7.1	44.7
204SG114X38	1.1/4x3/8	20.3	7.1	44.7
204SG114X12	1.1/4x1/2	20.3	7.1	44.7
204SG114X34	1.1/4x3/4	20.3	7.1	44.7
204SG114X1	1.1/4x1	20.3	7.1	44.7
204SG112X12	1.1/2x1/2	21.1	7.9	50.8
204SG112X34	1.1/2x3/4	21.1	7.9	50.8
204SG112X1	1.1/2x1	21.1	7.9	50.8
204SG112X114	1.1/2x1.1/4	21.1	7.9	50.8
204SG2X12	2x1/2	22.4	8.6	63.0
204SG2X34	2x3/4	22.4	8.6	63.0
204SG2X1	2x1	22.4	8.6	63.0
204SG2X114	2x1.1/4	22.4	8.6	63.0
204SG2X112	2x1.1/2	22.4	8.6	63.0
204SG212X112	2.1/2x1.1/2	27.2	11.2	68.1
204SG212X2	2.1/2x2	27.2	9.4	75.7
204SG3X1	3x1	28.7	12.2	83.3
204SG3X112	3x1.1/2	28.7	12.2	83.3
204SG3X2	3x2	28.7	12.2	83.3
204SG4X2	4x2	31.0	12.7	117.3
204SG4X3	4x3	31.0	12.7	117.3

other sizes on request

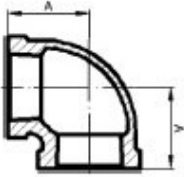


Cross

Malleable Cast Iron ASTM A197
Hot Dipped Galvanized

Code	Thread NPT	Size A mm
206SG18	1/8	17.5
206SG14	1/4	20.6
206SG38	3/8	24.1
206SG12	1/2	28.5
206SG34	3/4	33.3
206SG1	1	38.1
206SG114	1.1/4	44.5
206SG112	1.1/2	49.3
206SG2	2	57.2

MALLEABLE FITTINGS NPT



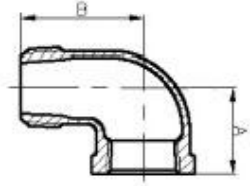
Elbow 90°

Malleable Cast Iron ASTM A197
Hot Dipped Galvanized

Code	Thread NPT	Size A mm
207SG18	1/8	17.5
207SG14	1/4	20.6
207SG38	3/8	24.1
207SG12	1/2	28.5
207SG34	3/4	33.3
207SG1	1	38.1
207SG114	1.1/4	44.5
207SG112	1.1/2	49.3
207SG2	2	57.2
207SG212	2.1/2	68.6
207SG3	3	78.2
207SG4	4	96.3

Street Elbow 90°

Malleable Cast Iron ASTM A197
Hot Dipped Galvanized



Code	Thread NPT	Size A mm	Size B mm
235SG14	1/4	24.0	37.0
235SG38	3/8	27.0	41.5
235SG12	1/2	32.0	51.0
235SG34	3/4	37.0	56.0
235SG1	1	41.5	65.0
235SG114	1.1/4	49.5	73.5
235SG112	1.1/2	54.5	79.5
235SG2	2	63.5	94.0

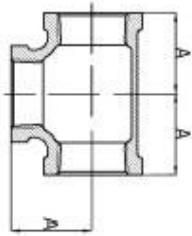
MALLEABLE FITTINGS NPT

Elbow 45°

Malleable Cast Iron ASTM A197
Hot Dipped Galvanized



Code	Thread NPT	Size A mm
208SG18	1/8	16.0
208SG14	1/4	18.5
208SG38	3/8	20.0
208SG12	1/2	22.0
208SG34	3/4	24.5
208SG1	1	28.5
208SG114	1.1/4	32.5
208SG112	1.1/2	36.0
208SG2	2	42.5
208SG212	2.1/2	49.5
208SG3	3	55.0
208SG4	4	66.0



Tee

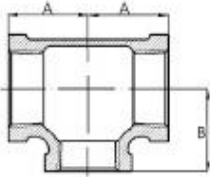
Malleable Cast Iron ASTM A197
Hot Dipped Galvanized

Code	Thread NPT	Size A mm
209SG18	1/8	17.5
209SG14	1/4	20.6
209SG38	3/8	24.1
209SG12	1/2	28.5
209SG34	3/4	33.3
209SG1	1	38.1
209SG114	1.1/4	44.5
209SG112	1.1/2	49.3
209SG2	2	57.2
209SG212	2.1/2	68.6
209SG3	3	78.2
209SG4	4	86.9

MALLEABLE FITTINGS NPT

Reducing Tee

Malleable Cast Iron ASTM A197
Hot Dipped Galvanized

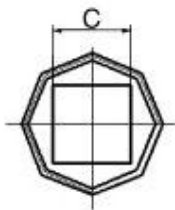
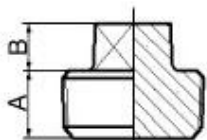


Code	Thread NPT	Size A mm	Size B mm
209SG12X14	1/2x1/4	24.6	24.9
209SG12X38	1/2x3/8	26.4	26.2
209SG34X38	3/4x3/8	28.5	28.7
209SG34X12	3/4x1/2	30.5	31.0
209SG1X12	1x1/2	32.0	35.5
209SG1X34	1x3/4	34.8	36.8
209SG114X34	1.1/4x3/4	36.8	41.2
209SG114X1	1.1/4x1	40.1	42.4
209SG112X12	1.1/2x1/2	35.8	42.2
209SG112X34	1.1/2x3/4	38.6	44.5
209SG112X1	1.1/2x1	41.9	45.7
209SG2X1	2x1	43.9	51.3
209SG2X114	2x1.1/4	48.3	53.3
209SG2X112	2x1.1/2	51.3	54.9
209SG3X12	3x1/2	43.0	65.0
209SG3X1	3x1	50.8	67.6
209SG3X2	3x2	64.0	73.4

other sizes on request

Square Head Plug

Malleable Cast Iron ASTM A197
Hot Dipped Galvanized

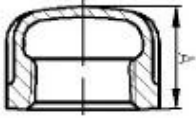


Code	Thread NPT	Size A mm	Size B mm	Size C mm
211SG18	1/8	9.4	6.1	7.2
211SG14	1/4	11.2	7.2	9.6
211SG38	3/8	12.2	7.9	11.1
211SG12	1/2	14.3	9.7	14.3
211SG34	3/4	16.0	11.2	15.9
211SG1	1	19.0	12.7	20.6
211SG114	1.1/4	20.3	14.2	23.8
211SG112	1.1/2	21.1	15.8	28.6
211SG2	2	22.4	17.3	33.3
211SG212	2.1/2	27.2	18.8	38.1
211SG3	3	28.7	20.3	42.9
211SG4	4	38.5	26.0	55.2

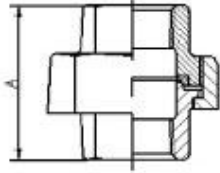
MALLEABLE FITTINGS NPT

Round Cap

Malleable Cast Iron ASTM A197
Hot Dipped Galvanized



Code	Thread NPT	Size A mm
212SG18	1/8	13.5
212SG14	1/4	16.0
212SG38	3/8	18.8
212SG12	1/2	22.1
212SG34	3/4	24.6
212SG1	1	29.5
212SG114	1.1/4	32.5
212SG112	1.1/2	33.8
212SG2	2	36.8
212SG212	2.1/2	43.2
212SG3	3	45.7
212SG4	4	52.8



Union FF

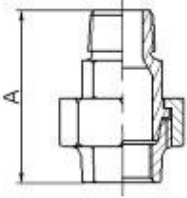
Malleable Cast Iron ASTM A197
Hot Dipped Galvanized

Code	Thread NPT	Size A mm
220SG18	1/8	32.0
220SG14	1/4	37.0
220SG38	3/8	41.0
220SG12	1/2	44.0
220SG34	3/4	49.5
220SG1	1	52.5
220SG114	1.1/4	57.5
220SG112	1.1/2	61.5
220SG2	2	70.0
220SG212	2.1/2	82.0
220SG3	3	89.0
220SG4	4	98.0

MALLEABLE FITTINGS NPT

Union MF

Malleable Cast Iron ASTM A197
Hot Dipped Galvanized



Code	Thread NPT	Size A mm
221SG14	1/4	55.0
221SG38	3/8	58.0
221SG12	1/2	66.0
221SG34	3/4	72.0
221SG1	1	80.0
221SG114	1.1/4	90.0
221SG112	1.1/2	95.0
221SG2	2	106.0
221SG212	2.1/2	118.0
221SG3	3	126.0
221SG4	4	133.0

